

CONSTRUCTION Minituft 5/64" loop pile
STRUCTURE Minituft 5/64" bouclé
STRUKTUR Minituft 5/64" Schlinge
STRUCTUUR Minituft 5/64" lussenpool

PILE MATERIAL 100% Econyl® yarn,
COMPOSITION DU VELOURS regenerated solution
POLMATERIAL dyed nylon
POOLMATERIAAL

PRIMARY BACKING non woven PES
SUPPORT PES non tissé
TRÄGERMATERIAL PES Vlies
TUFTDOEK PES vilt

SECONDARY BACKING Action Back
DOSSIER
RÜCKEN
TAPIJTRUG

PILE WEIGHT Ca. 640 gr/m²
POIDS DU VELOURS
POLEINSATZGEWICHT
POOLGEWICHT

TOTAL WEIGHT Ca. 2.856 gr/m²
POIDS TOTAL
GESAMTGEWICHT
TOTAAL GEWICHT

PILE HEIGHT Ca. 1 mm
EPAISSEUR DU VELOURS
POLHÖHE
POOLHOOGTE

TOTAL HEIGHT Ca. 5,3 mm
EPAISSEUR TOTAL
GESAMTHÖHE
TOTALE DIKTE

TUFT DENSITY Ca. 200 000/m²
NOMBRES DE POINTS
NOPPENZAHL
AANTAL PUNTEN

PILE DENSITY Ca. 0,215 g/cm³
DENSITÉ DU VELOURS
POLROHDICHTÉ
POOLDICHTHEID

CLASSIFICATION EN 1307
CLASSEMENT 33 - LC1
KLASSIFIKATION
CLASSIFICATIE

CASTOR CHAIR SUITABILITY EN 985
CHAISE À ROULETTES A: intensive use
STUHLROLLENEIGNUNG
ROLSTOELGESCHIKTHEID

STAIR SUITABILITY EN 1963
ESCALIERS A: intensive use
TREPPENEIGNUNG
TRAPPENGESCHIKTHEID

PERMANENTLY ANTISTATIC ISO 6356
ANTISTATIQUE PERMANENT < 2 kV
PERMANENT ANTISTATISCH
PERMANENT ANTISTATISCH

IMPACT NOISE RATING ISO 140-8
ISOLATION PHONIQUE 18 dB ΔLw
TRITTSCHALLVERBESSERUNG
GELUIDSISOLATIE

SOUND ABSORPTION ISO 354
ABSORPTION PHONIQUE 0,15 αw
SCHALLABSORPTIONSGRAD

THERMAL RESISTANCE ISO 8302
RÉSISTANCE THERMIQUE 0,05 m² K/W
WÄRMEDURCHLASSWIDERSTAND
WARMTEDOORLAATWEERSTAND

FASTNESS TO LIGHT ISO 105-B02
SOLIDITÉ A LA LUMIÈRE ≥ 7
LICHTECHTHEIT
LICHTECHTHEID

COLOUR FASTNESS TO WATER EN ISO 105-E01
SOLIDITÉ À L'EAU ≥ 4-5
WASSERRECHTHEIT
WATERECHTHEID

FIRE RESISTANCE EN 13501-1
COMPORTEMENT AU FEU Cfl-s1 if glued
BRENNVERHALTEN
BRANDGEDRAG

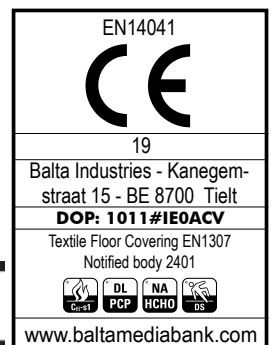
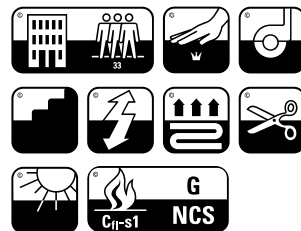
RUBBING FASTNESS EN ISO 105-X12
SOLIDITÉ AU FROTTEMENT ≥ 4
REIBECHTHEIT
WRIJFECHTHEID

NUMBER OF COLOURS 9
NOMBRES DE COULEURS
ANZAHL FARBEN
AANTAL KLEUREN

WIDTH EN ISO 3018
LARGEUR ca. 400 cm
BREITE
BREEDTE



No WET cleaning



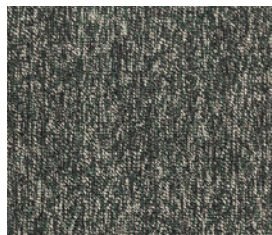
blaze^{W2W} AB



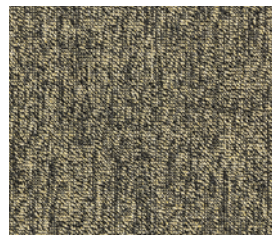
▲ 399



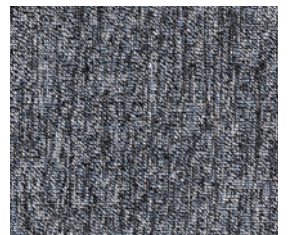
▲ 831



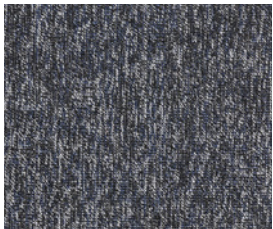
▲ 668



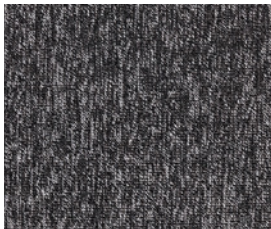
▲ 270



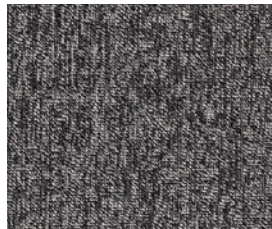
▲ 963



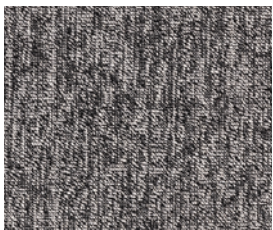
▲ 553



▲ 990



▲ 961



▲ 907

 arc edition