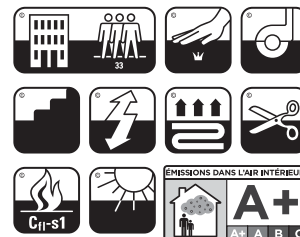


<p>CONSTRUCTION Tufting 5/64" minituft STRUCTURE Tufté 5/64" minituft STRUKTUR Getuftet 5/64" minituft STRUCTUUR Getuft 5/64" minituft</p> <p>PILE MATERIAL 100% PA 6 solution dyed COMPOSITION DU VELOURS POLMATERIAL POOLMATERIAAL</p> <p>PRIMARY BACKING Non woven PES SUPPORT Non tissé PES TRÄGERMATERIAL Vlies, PES TUFTDOEK Vilt, PES</p> <p>SECONDARY BACKING Action Back DOSSIER RÜCKEN TAPIJTRUG</p> <p>PILE WEIGHT Ca. 500 gr/m² POIDS DU VELOURS POLEINSATZGEWICHT POOLGEWICHT</p> <p>TOTAL WEIGHT Ca. 2.400 gr/m² POIDS TOTAL GESAMTGEWICHT TOTAAL GEWICHT</p> <p>PILE HEIGHT Ca. 1,1 mm EPAISSEUR DU VELOURS POLHÖHE POOLHOOGTE</p> <p>TOTAL HEIGHT Ca. 5,1 mm EPAISSEUR TOTALE GESAMTHÖHE TOTALE DIKTE</p> <p>TUFT DENSITY Ca. 200.000/m² NOMBRES DE POINTS NOPPENZAHL AANTAL PUNTEN</p> <p>PILE DENSITY Ca. 0.140 g/cm³ DENSITÉ DU VELOURS POLROHDICHTÉ POOLDICHTHEID</p> <p>CLASSIFICATION EN 1307 CLASSEMENT 33 - LC1 KLASSIFIKATION CLASSIFICATIE</p> <p>CASTOR CHAIR SUITABILITY EN 985 CHAISE À ROULETTES A: intensive use STUHLROLLENEIGNUNG ROLSTOELGESCHIKTHEID</p> <p>STAIR SUITABILITY EN 1963 ESCALIERS A: intensive use TREPPENEIGNUNG TRAPPENGESCHIKTHEID</p>	<p>PERMANENTLY ANTISTATIC ISO 6356 ANTISTATIQUE PERMANENT < 2 kV PERMANENT ANTISTATISCH PERMANENT ANTISTATISCH</p> <p>IMPACT NOISE RATING ISO 140-8 ISOLATION PHONIQUE 18 dB ΔLw TRITTSCHALLVERBESSERUNG GELUIDSISOLATIE</p> <p>SOUND ABSORPTION ISO 354 ABSORPTION PHONIQUE 0.15 αw SCHALLABSORPTIONSGRAD GELUIDSABSORPTIE</p> <p>THERMAL RESISTANCE ISO 8302 RÉSISTANCE THERMIQUE 0.05 m² K/W WÄRMEDURCHLASSWIDERSTAND WARMTEDOORLAATWEERSTAND</p> <p>FASTNESS TO LIGHT ISO 105-B02 SOLIDITÉ A LA LUMIÈRE ≥ 7 LICHTECHTHEID LICHTECHTHEID</p> <p>COLOUR FASTNESS TO WATER EN ISO 105-E01 SOLIDITÉ À L'EAU ≥ 4-5 WASSERRECHTHEID WATERECHTHEID</p> <p>RUBBING FASTNESS EN ISO 105-X12 SOLIDITÉ AU FROTTEMENT ≥ 4 REIBECHTHEID WRIJFECHTHEID</p> <p>FIRE RESISTANCE EN 13501-1 COMPORTEMENT AU FEU Cfl-s1 (if glued) BRENNVERHALTEN BRANDGEDRAG</p> <p>NUMBER OF COLOURS 11 NOMBRES DE COULEURS ANZAHL FARBEN AANTAL KLEUREN</p> <p>WIDTH EN ISO 3018 LARGEUR ca. 400 cm BREITE BREEDTE</p>
---	---

1307

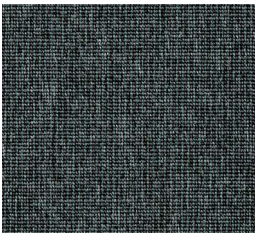


No WET cleaning





▲ 93



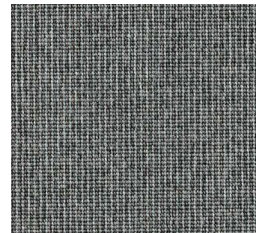
▲ 73



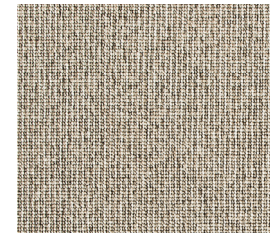
▲ 78



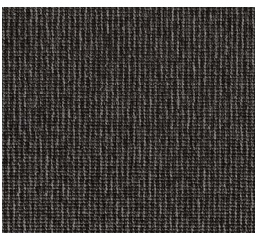
▲ 79



▲ 90



▲ 34



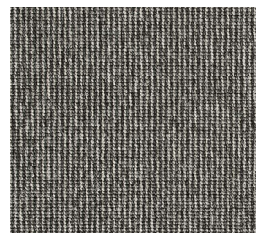
▲ 94



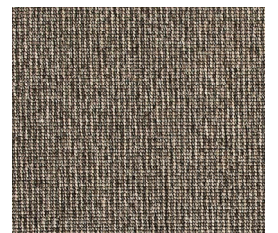
▲ 99



▲ 98



▲ 96



▲ 49