

CONSTRUCTION	ituft 1/12" loop
STRUCTURE	ituft 1/12" bouclé
STRUKTUR	ituft 1/12" Schlinge
STRUCTUUR	ituft 1/12" lussenpool
PILE MATERIAL	100% PA 6 IMPREL®
COMPOSITION DU VELOURS	Solution Dyed
POLMATERIAL	
POOLMATERIAAL	
PRIMARY BACKING	Non woven PES
SUPPORT	PES non tissé
TRÄGERMATERIAL	PES Vlies
TUFTDOEK	PES Vilt
SECONDARY BACKING	Twinback
DOSSIER	
RÜCKEN	
TAPIJTRUG	
PILE WEIGHT	Ca. 780 gr/m ²
POIDS DU VELOURS	
POLEINSATZGEWICHT	
POOLGEWICHT	
TOTAL WEIGHT	Ca. 2.400 gr/m ²
POIDS TOTAL	
GESAMTGEWICHT	
TOTAAL GEWICHT	
PILE HEIGHT	Ca. 4,4 mm
EPAISSEUR DU VELOURS	
POLHÖHE	
POOLHOOGTE	
TOTAL HEIGHT	Ca. 7,8 mm
EPAISSEUR TOTAL	
GESAMTHÖHE	
TOTALE DIKTE	
TUFT DENSITY	Ca. 282 000/m ²
NOMBRES DE POINTS	
NOPPENZAHL	
AANTAL PUNTEN	
PILE DENSITY	Ca. 0,131 g/cm ³
DENSITÉ DU VELOURS	
POLROHDICHTE	
POOLDICHTHEID	
CLASSIFICATION	EN 1307
CLASSEMENT	32 - LC2
KLASSIFIKATION	
CLASSIFICATIE	
CASTOR CHAIR SUITABILITY	EN 985
CHAISE À ROULETTES	A: intensive use
STUHLROLLENEIGNUNG	
ROLSTOELGESCHIKTHEID	
STAIR SUITABILITY	EN 1963
ESCALIERS	A: intensive use
TREPPENEIGNUNG	
TRAPPENGESCHIKTHEID	

PERMANENTLY ANTISTATIC ISO 6356
ANTISTATIQUE PERMANENT < tbc kV
PERMANENT ANTISTATISCH
PERMANENT ANTISTATISCH

IMPACT NOISE RATING ISO 140-8
ISOLATION PHONIQUE 26 dB ΔLw
TRITTSCHALLVERBESSERUNG
GELUIDSISOLATIE

SOUND ABSORPTION ISO 354
ABSORPTION PHONIQUE 0,25 αw
SCHALLABSORPTIONSGRAD

THERMAL RESISTANCE ISO 8302
RÉSISTANCE THERMIQUE 0,10 m² K/W
WÄRMEDURCHLASSWIDERSTAND
WARMTEDOORLAATWEERSTAND

FASTNESS TO LIGHT ISO 105-B02
SOLIDITÉ A LA LUMIÈRE ≥ 7
LICHTECHTHEIT
LICHTECHTHEID

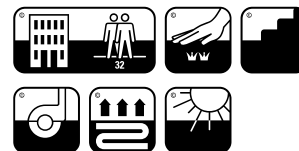
COLOUR FASTNESS TO WATER EN ISO 105-E01
SOLIDITÉ À L'EAU ≥ 4-5
WASSERECHTHEIT
WATERECHTHEID

FIRE RESISTANCE EN 13501-1
COMPORTEMENT AU FEU Cfl-s1
BRENNVERHALTEN
BRANDGEDRAG

RUBBING FASTNESS EN ISO 105-X12
SOLIDITÉ AU FROTTEMENT ≥ 4
REIBECHTHEIT
WRIJFECHTHEID

NUMBER OF COLOURS 9
NOMBRES DE COULEURS
ANZAHL FARBEN
AANTAL KLEUREN

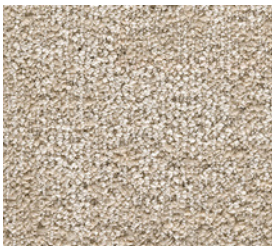
WIDTH EN ISO 3018
LARGEUR ca. 400 cm
BREITE
BREEDTE



www.pro-dis.info



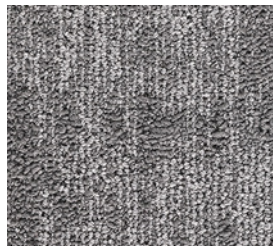
EN14041
CE
21
Balta Industries - Kanegem- straat 15 - BE 8700 Tielt
DOP: 1011#IE0ACL
Textile Floor Covering EN1307 Notified body 2401
www.baltamediabank.com



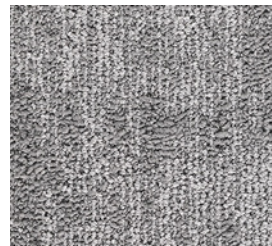
▲ 35



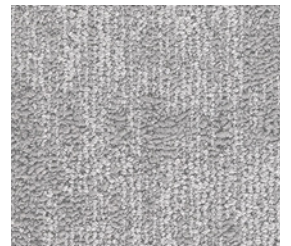
▲ 47



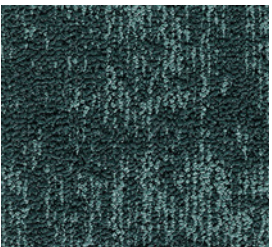
▲ 96



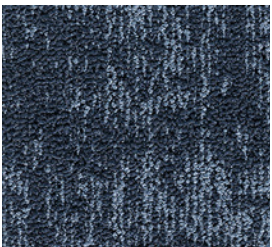
▲ 95



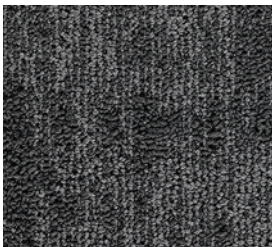
▲ 90



▲ 27



▲ 77



▲ 97



▲ 98