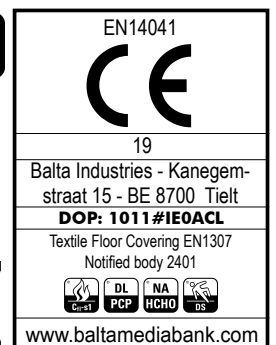
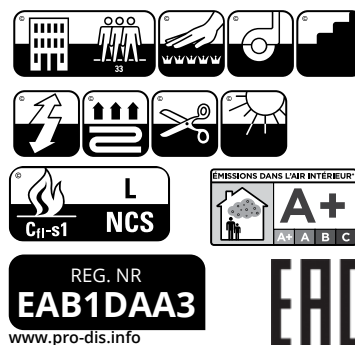
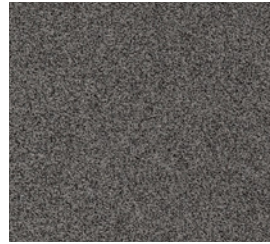


CONSTRUCTION	Tufting 1/10" cut pile frisé	PERMANENTLY ANTISTATIC	ISO 6356
STRUCTURE	Tufté 1/10" cut pile frisé	ANTISTATIQUE PERMANENT	< 2 kV
STRUKTUR	Getuftet 1/10" cut pile frisé	PERMANENT ANTISTATISCH	
STRUCTUUR	Getuft 1/10" cut pile frisé	PERMANENT ANTISTATISCH	
PILE MATERIAL	Econyl® yarn, regenerated	IMPACT NOISE RATING	ISO 140-8
COMPOSITION DU VELOURS	solution dyed nylon & PA6	ISOLATION PHONIQUE	32 dB ΔLw
POLMATERIAL		TRITTSCHALLVERBESSERUNG	
POOLMATERIAAL		GELUIDSISOLATIE	
PRIMARY BACKING	non woven PES	SOUND ABSORPTION	ISO 354
SUPPORT	PES non tissé	ABSORPTION PHONIQUE	0,20 αw
TRÄGERMATERIAL	PES Vlies	SCHALLABSORPTIONSGRAD	
TUFTDOEK	PES vilt	THERMAL RESISTANCE	ISO 8302
SECONDARY BACKING	Action Back	RÉSISTANCE THERMIQUE	0,12 m² K/W
DOSSIER		WÄRMEDURCHLASSWIDERSTAND	
RÜCKEN		WARMTEDOORLAATWEERSTAND	
TAPIJTRUG		FASTNESS TO LIGHT	ISO 105-B02
PILE WEIGHT	Ca. 1.300 gr/m²	SOLIDITÉ A LA LUMIÈRE	≥ 5-6
POIDS DU VELOURS		LICHTECHTHEIT	
POLEINSATZGEWICHT		LICHTECHTHEID	
POOLGEWICHT		COLOUR FASTNESS TO WATER	EN ISO 105-E01
TOTAL WEIGHT	Ca. 2.450 gr/m²	SOLIDITÉ À L'EAU	≥ 4-5
POIDS TOTAL		WASSERRECHTHEIT	
GESAMTGEWICHT		WATERECHTHEID	
TOTAAL GEWICHT		FIRE RESISTANCE	EN 13501-1
PILE HEIGHT	Ca. 6,2 mm	COMPORTEMENT AU FEU	Cfl-s1
EPAISSEUR DU VELOURS		BRENNVERHALTEN	
POLHÖHE		BRANDGEDRAG	
POOLHOOGTE		RUBBING FASTNESS	EN ISO 105-X12
TOTAL HEIGHT	Ca. 9,0 mm	SOLIDITÉ AU FROTTEMENT	≥ 4
EPAISSEUR TOTAL		REIBECHTHEIT	
GESAMTHÖHE		WRIJFECHTHEID	
TOTALE DIKTE		NUMBER OF COLOURS	10
TUFT DENSITY	Ca. 164 000/m²	NOMBRES DE COULEURS	
NOMBRES DE POINTS		ANZAHL FARBEN	
NOPPENZAHL		AANTAL KLEUREN	
AANTAL PUNTEN		WIDTH	EN ISO 3018
PILE DENSITY	Ca. 0,158 g/cm³	LARGEUR	ca. 400 cm
DENSITÉ DU VELOURS		BREITE	
POLROHDICHTE		BREEDTE	
POOLDICHTHEID			
CLASSIFICATION	EN 1307		
CLASSEMENT	33 - LC5		
KLASSIFIKATION			
CLASSIFICATIE			
CASTOR CHAIR SUITABILITY	EN 985		
CHAISE À ROULETTES	A: intensive use		
STUHLROLLENEIGNUNG			
ROLSTOELGESCHIKTHEID			
STAIR SUITABILITY	EN 1963		
ESCALIERS	A: intensive use		
TREPPENEIGNUNG			
TRAPPENGESCHIKTHEID			



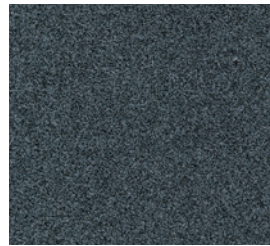
gleam^{W2W} AB



▲ 847



▲ 907



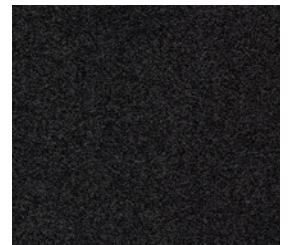
▲ 579



▲ 994



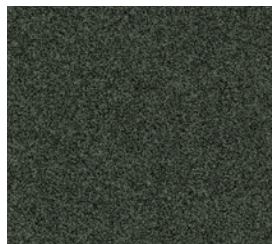
▲ 569



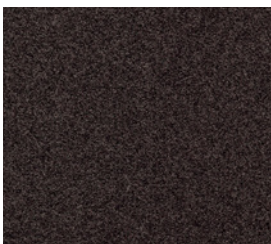
▲ 966



▲ 306



▲ 615



▲ 866



▲ 212

